

Exposure to community homicide during pregnancy and adverse birth outcomes: A within-community matched design

Dana E. Goin¹, Anu M. Gomez², Kriszta Farkas¹, Scott Zimmerman¹, Ellicott C. Matthay¹, Jennifer Ahern¹

¹ Division of Epidemiology, School of Public Health, University of California, Berkeley

² Sexual Health and Reproductive Equity Program, School of Social Welfare, University of California, Berkeley

ABSTRACT

Background: Community violence is an understudied aspect of social context that may affect risk of preterm birth (PTB) and small-for-gestational age (SGA).

Methods: California mothers with live singleton births who were exposed to a homicide in their Census tract of residence in 2007-2011 were matched to unexposed mothers within the same tract. A weighted linear probability model was used to estimate risk differences, with weights corresponding to the matched data structure. We estimated the average treatment effect on the treated (ATT) of homicide exposure during the pre-conception period, first trimester, and second trimester on the risk of PTB and SGA. Negative controls assessed whether our results could be due to uncontrolled temporal patterning.

Results: We found a small increase in risk of SGA associated with homicide exposure in the first trimester (ATT 0.14% [95% CI -0.01%, 0.30%]), but not for exposure during the pre-conception period (ATT -0.01% [95% CI -0.17%, 0.15%]) or the second trimester (ATT -0.06% [95% CI -0.23%, 0.11%]). Risk of PTB was not affected by homicide exposure. When women were exposed to homicides during all three exposure windows there was a larger increase in risk of SGA (ATT 1.09% [95% CI 0.15%, 2.03%]) but not PTB (ATT 0.14% [95% CI -0.74%, 1.01%]). Exposure to three or more homicides was also associated with greater risk of SGA (ATT 0.78% [95% CI 0.15%, 1.40%]). The negative controls indicated that residual confounding by temporal patterning was unlikely.

Conclusions: Homicide exposure during early pregnancy is associated with a small increased risk of SGA.

Keywords: homicide, violence, premature birth, small for gestational age, California

Community violence is an aspect of the contextual environment that has been recognized as relevant to fetal and infant health (1), but which has thus far been understudied in perinatal research. The adverse effects of direct violent injury on pregnant women and their infants are well documented (2–4); however, violent events in one’s community may have impacts beyond those directly harmed. Pregnant women may be indirectly affected by community violence through injury of friends or family, witnessing violence, or hearing about violence through neighbors or the media. Stress due to these experiences may have implications for both maternal and fetal health (5). Exposure to community violence may also play a role in the well-documented racial/ethnic disparities in pregnancy complications, gestational weight gain (6,7), growth restriction, and preterm birth (8–11), through disparities in exposure to violence and/or differential response (e.g., greater internalization of stress) to violence (12).

Community violence may be an important mechanism through which historical patterns of segregation and economic exclusion influence health outcomes and health disparities. Segregation of American cities has played a significant role in neighborhood economic development in the 20th century (13–15), and patterns of investment associated with racial and economic segregation have implications for community health today (11,16–18), especially for lower income and minority women. Black women are more likely to live in economically neglected neighborhoods (13), to be exposed to violence during pregnancy (19,20), and to have elevated risk of preterm birth compared to white women (9,10,21). In-utero exposure to community violence may also have consequences for health and economic outcomes later in life, contributing to disparities in adult health (22–26).

Exposure to community violence may affect risk of adverse birth outcomes via two mechanisms. First, there may be behavioral changes associated with exposure that increase risk factors for preterm birth and intrauterine growth restriction. Some women may respond to community violence by adopting coping behaviors or altering activities in order to mitigate exposure to violence or to alleviate the psychological burden of the experience. Health behaviors linked to violence exposure include reduced physical activity, poor diet or nutrition, use of tobacco, alcohol, or other substances, and increased risky sexual behaviors (27–29). Each

of these behaviors has either been directly linked or is related to pregnancy complications (e.g., preeclampsia, gestational diabetes, or infection) associated with adverse birth outcomes (30–37).

Second, there is evidence of direct biological stress response mechanisms associated with community violence that may impact health during pregnancy (38,39), although some recent evidence has been mixed (40). Experiencing stress due to community violence can activate the hypothalamic-pituitary-adrenal (HPA) axis, which secretes corticotropin-releasing hormone (CRH) that stimulates the production of glucocorticoids like cortisol. The placenta also produces CRH, and cortisol and other biological effectors of stress are associated with increased production of placental CRH, which may be responsible for instigating the events leading to parturition (5,21,41,42). Placental CRH is thought to act as a marker of gestational time in pregnant women, regulating the timing of parturition, as its levels increase over the course of gestation and peak before initiation of labor (43,44). Therefore, stressful events that activate the maternal HPA axis early in pregnancy may lead to increased production of placental CRH and overstimulation of the fetal HPA axis, leading to preterm birth.

There has been substantial research in recent years about the contribution of the community environment to disparities in adverse pregnancy outcomes (8,10,45–50). However, literature assessing the relationship between community violence and gestational health is still in its infancy (51–55). One of the main challenges in studying community violence is structural confounding (56,57). Places with high and low levels of violence tend to differ in many ways that affect health, and these factors are too correlated for statistical adjustment to adequately disentangle. In this study, we leverage temporal variability in homicide to isolate the effect of violence exposure as an acute stressor or shock that could affect pregnancy outcomes. This allows us to address the issue of structural confounding by comparing women *within* communities who conceived at different times and therefore had different exposure to violence immediately before and during pregnancy. This within-community approach controls for any measured or unmeasured community-level factors that were constant over the study period. It also addresses the related problem of neighborhood selection, in which individuals are not

comparable across neighborhoods due to patterns of residential mobility that replicate income and racial/ethnic inequalities (58).

We examined whether exposure to community homicide during pregnancy is associated with increased risk of preterm birth and small-for-gestational age (SGA). Because there may be different mechanisms affecting the maternal response to homicide during different periods of pregnancy (5,21), we examined the associations during the pre-conception period, the first trimester, and the second trimester. We also examined whether exposure in all three exposure windows or to three or more homicides at any point from pre-conception through the second trimester were associated with stronger effects to assess possible dose-response.

DATA & METHODS

Data description

This study used California birth and death records from 2007 to 2011 to estimate the association of homicide exposure during pregnancy with preterm birth and SGA among singleton gestations. We estimated the date of conception using the birthdate and estimate of gestational age, and restricted our analysis to women who conceived between January 1, 2007 and March 1, 2011 to ensure women of all gestational lengths were eligible to be included in the analysis to avoid fixed cohort bias (59).

Homicides were identified from the death records using ICD-10 cause of death codes U01*, U02*, X85 – Y09, Y871, Y35*. Homicide victims' addresses were geocoded from the death records and maternal addresses at delivery were geocoded from the birth records. We defined preterm delivery as delivery of a live singleton birth before 37 weeks gestation based on the estimate of gestational age in the birth record. SGA was determined using birthweight, gestational age, and infant sex from the birth record and classified according to the sex-specific reference from Talge et al (60). Covariates were obtained from the birth record and included mother's age, race/ethnicity, parity, health insurance type used for prenatal care, conception year, and conception season. We categorized maternal age as younger than 20, 20-24, 25-29, 30-34, and 35 or older. Educational attainment was categorized as less than high school, high school graduate, some college or associate's degree, bachelor's degree, graduate degree, or

missing. Insurance types were no prenatal care, Medi-Cal without Comprehensive Perinatal Services Program (CPSP) services, other government insurance, private insurance, self-pay, Medi-Cal with CPSP services, and other. Parity was categorized as 1, 2, or 3 or more.

We assessed three main windows of exposure to homicide during pregnancy: the pre-conception period (12 weeks prior to estimated conception date), the first trimester (weeks 0-12 of pregnancy) and a restricted second trimester (weeks 13-22). We used a restricted second trimester rather than the full second trimester (weeks 13-27) because 22 weeks is currently understood to be the minimum gestation time for infant viability (61). A challenge in studying the relationship of exposures that occur during pregnancy and preterm birth is those who deliver preterm have less time to accrue exposure. By restricting the exposure period to 22 weeks, we ensured that all gestations had an equal number of possible exposure-weeks. A mother was classified as exposed during the pre-conception period, the first trimester, or the second trimester if a homicide occurred during the corresponding weeks in her Census tract (Figure 1). To assess whether higher levels of exposure were associated with worse outcomes, we examined whether exposure to homicide in all three exposure windows (that is, at least one homicide occurred during the pre-conception period, first trimester, and second trimester), or exposure to three or more homicides at any point during the three exposure windows, was associated with preterm birth or SGA.

This study was approved by the Committees for the Projection of Human Subjects for the California Health and Human Services Agency and the University of California, Berkeley. Information for researchers interested in accessing the data used in this study is available in the supplemental material.

Matching and Statistical Analysis

We used general exact matching by Census tract of residence at the time of delivery to estimate within-tract associations. Our approach matched each exposed mother to all unexposed mothers with the same Census tract (62,63). The unexposed group was then weighted by dividing the number of exposed by the number of unexposed to account for the fact that there may be multiple controls for each exposed mother. Including these weights in a

linear probability model estimates the average treatment effect on the treated (ATT) within Census tracts (64,65). The regression model used in the analysis is as follows, with weights that estimate within-tract associations:

$$P(Y_{i,j}) = \beta_0 + \beta_1 x_j + \beta_2 \text{conception year} + \beta_3 \text{conception season} + \beta_4 \text{race} \\ + \beta_5 \text{health insurance} + \beta_6 \text{age} + \beta_7 \text{parity} + \epsilon_{i,j}$$

Where $Y_{i,j}$ is birth outcome for individual i according to exposure window j and x_j is homicide exposure in pregnancy window j . Due to potential clustering by Census tract, we used Huber-White robust standard errors for inference (66).

We conducted falsification tests in the form of a negative control to assess whether our results could be due to systematic error. For this, we first created a pseudo-birth week, defined as 40 weeks after the conception week, which was estimated using the birth week and the reported gestational age at birth. We did so to ensure any seasonality in preterm deliveries did not contaminate the characterization of the exposure in the negative control. The first negative control was defined as homicide exposure in the 12 weeks (0-3 months) after the pseudo-birth week, and the second control period was the 13-24 weeks (3-6 months) after the pseudo-birth week. Since these exposures occurred after the birth, they could not affect the outcome of the pregnancy. An observed association in either of these analyses would suggest a biasing factor that could affect our results (e.g. residual effects of seasonality, autocorrelation in homicide exposure, or other temporal patterning leading to spurious results). It is important to note, however, that these falsification tests will not identify bias due to measurement error, another important form of systematic error (67).

Randomization inference

Randomization inference was used to quantify the likelihood of our results occurring as a result of random error. Randomization inference is a type of permutation test in which the exposure values are randomly assigned to individuals, allowing us to compare the observed association with the distribution of associations that occur due to chance. We performed the

randomization inference by permuting the homicide exposure values across the full dataset, rerunning the matching and analysis steps, and recording the results. This was done 1,000 times to generate a distribution of the association under the null hypothesis of no relationship between homicide exposure and adverse birth outcomes. We then compared the observed association estimate to the null distribution to assess the likelihood that our results could be attributed to random error.

We used R version 3.5 for all statistical analyses (code is available in the supplemental material).

RESULTS

There were 2,184,177 mothers with singleton conceptions between January 1, 2007, and March 1, 2011 who gave birth to a live infant in California. We had complete covariate values for 2,133,662 (97.7%) of these women (Figures 2 and 3). However, a significant portion—349,077 (16.4%)—of these women were missing values for education. Given the large population size, we were unable to use multiple imputation or other missing data procedures due to the computational limitations. Therefore, our main analysis does not include educational attainment as a covariate. However, we include a sensitivity analysis in which we include educational attainment in the analysis with an indicator for missingness. These results are the same as those presented here, and are available in the supplemental material.

Prevalence of homicide exposure was 8.2% during the pre-conception period, 8.7% during the first trimester, and 6.8% during the second trimester (Table 1). Approximately 0.9% of mothers were exposed to three or more homicides during the three exposure windows, and 0.2% of mothers were exposed to one or more homicides in each of the three exposure windows. Prevalence of preterm birth was 8.9% and prevalence of SGA was 9.3%. The proportion exposed to homicide and risk of adverse birth outcomes varied across racial/ethnic groups. In the pre-conception, first, and second trimesters, prevalence of homicide exposure was lowest for non-Hispanic white mothers (4.9%, 5.2%, and 4.0%, respectively) and highest for non-Hispanic black mothers (14.0%, 14.7%, and 11.6%, respectively). The prevalence of preterm birth was lowest for Hispanic mothers (8.5%) and highest for non-Hispanic black mothers

(13.0%) over the study period. SGA was also more common among non-Hispanic black mothers (15.3%), and least common among non-Hispanic white mothers (7.4%).

In the adjusted analyses of the matched data, we did not find meaningfully increased risk of preterm birth among mothers exposed to a homicide during the pre-conception period (ATT: 0.09% [95% CI -0.06%, 0.24%]) and the first trimester (ATT: 0.07% [95% CI -0.09%, 0.22%]). There was also no association of preterm birth with exposure during the second trimester (ATT: -0.02% [95% CI: -0.19%, 0.14%]) (Figure 4). Randomization inference suggests the observed associations between homicide exposure and preterm birth are likely due to chance (Supplemental Figures 1-3). The relationship between SGA and homicide exposure in the pre-conception period was ATT: -0.01% [95% CI -0.17%, 0.15%], the first trimester association was ATT: 0.14% [95% CI -0.01%, 0.30%], and the second trimester association was ATT: -0.06% [95% CI -0.23%, 0.11%] (Figure 4). The randomization inference suggests the relationship of first trimester homicide exposure and SGA was not due to chance (Supplemental Figure 4 and Supplemental Table 1).

For both preterm birth and SGA, the results of the negative controls were null. For example, the estimated 0-3 months negative control ATT was -0.02% (95% CI -0.17%, 0.14%) for preterm birth and -0.03% (95% CI -0.19%, 0.12%) for SGA. The 3-6 months negative control ATT estimate was -0.04% (95% CI -0.10%, 0.12%) for preterm birth and -0.04% (95% CI -0.20%, 0.12%) for SGA.

Exposure to one or more homicides in each of the three exposure windows was associated with elevated risk of SGA (ATT: 1.09% [95% CI 0.15%, 2.03%]) (Figure 5), but not preterm birth (ATT: 0.14% [95% CI -0.74%, 1.01%]). Similarly, exposure to three or more homicides at any point during the three exposure windows was associated with increased risk of SGA (ATT: 0.78% [95% CI 0.15%, 1.40%]), but not preterm birth (ATT: 0.32% [95% CI -0.28%, 0.92%]). The randomization inference suggests that the results for SGA were unlikely to be due to chance (Supplemental Figures 8 and 9, and Supplemental Table 1).

DISCUSSION

In this study, exposure to homicide during the first trimester of pregnancy was associated with a small increased risk of SGA among mothers in California. We did not find increases in risk of preterm birth associated with homicide exposure during the pre-conception period, the first trimester, or the second trimester. Exposure to multiple homicides was associated with greater elevations in risk of SGA, but not preterm birth. We used a design that matched on community to avoid issues related to structural confounding and neighborhood selection, and found our results were robust to several falsification tests.

Previous studies that have examined homicide exposure and gestational outcomes have found mixed results. A 2016 study of mothers in Brazil found a 1.5% increase in risk of preterm birth associated with one standard deviation increase in homicide rates during the first trimester, with stronger associations found among mothers with lower educational attainment (54). A 2014 study found no association between homicide exposure and gestational age among mothers in Mexico (55). Both studies used fixed effects to estimate within community associations, and the study of Brazilian mothers found the strongest associations for exposures during the first trimester. We utilized a similar approach by matching on communities and also found that the associations were strongest in the first trimester. Differences in results between these studies may be attributable to differences in context—for example, consequences of maternal homicide exposure in Mexico, Brazil, and California may differ based on a variety of factors, including family and community social support, access to prenatal health care, or political empowerment.

There were several limitations to our approach. In particular, our use of a population-level database of birth records had several potential sources of measurement error. We only had access to the mothers' addresses at the time of delivery; however, it is likely some portion of women moved Census tracts during their pregnancy, and their exposure may be incorrectly assigned. The homicides were geocoded from California's death records based on the address of the decedent rather than the location where the homicide occurred. While homicide locations can be captured with crime records, both approaches have some tradeoffs. Our approach does not capture women exposed to a homicide in their neighborhood if the decedent lived elsewhere, or women exposed to homicide in a neighborhood that differs from

their own. However, homicides captured in death records are more complete than law enforcement data and can be identified with more granular temporal and geographic resolution. Furthermore, the experienced reaction to violence may have stronger implications for women who know someone who was killed, which is more likely if the victim lived in her neighborhood; there may also be stronger behavioral implications for pregnant women who live in the same neighborhood as the deceased, especially related to diet and exercise, if they modify activities due to fear or grief.

We defined the community of interest as the Census tract in this analysis. We expect that residents would be aware of homicides that occurred within this geographic unit; however, it is possible that smaller units would better align with how women conceive of their neighborhood and who they think of as their neighbors. In general, studies that rely on definitions of neighborhood units may be sensitive to the choice of geographic unit, a problem that has been discussed as the modifiable areal unit problem (68). Our use of within community comparisons, matched on Census tract, avoids comparisons across communities in which other characteristics of communities are likely to differ substantially and lead to problems with structural confounding (57,58). We additionally controlled for year and season of conception. Characteristics of communities that remain constant over the study period are thus controlled by design. However, the approach relies on the assumption that within these short time windows (year and season) there are no time varying confounders that affect homicide occurrence and preterm delivery.

In addition, gestational age is an estimate, and previous validation studies have suggested the clinical estimate we used in this study may underestimate preterm birth compared to early ultrasound (69). Gestational age is most accurate when measured early in pregnancy, and it is possible women who have their first prenatal visit later in their pregnancy could also be more likely to be exposed to homicides in their communities, which may create systematic error associated with the mismeasurement of gestational age. One goal of matching on tract and controlling for individual characteristics was to mitigate this type of error. Finally, because this analysis used birth records that only capture live births or gestations that persist until at least 22 weeks, we were unable account for possible fetal loss or induced abortion due

to homicide exposure. An indirect way to address this would be to examine the relationship between homicides and birth rates, but given the small population size of Census tracts, monthly birth rates were too variable to model reliably. Bias due to fetal loss may have especially affected our estimates for second trimester exposure, as the fetus must have survived past the first trimester in order to be exposed. An ongoing research interest for our group is to address the issues of reproductive decision-making, fetal loss, and immortal time bias in studies of violence exposure and birth outcomes.

In this study, we found exposure to homicide during the first trimester of pregnancy was associated with a small increased risk of SGA among mothers in California. Exposure to homicide during the pre-conception period and the second trimester were not associated with SGA. It is possible that the physiologic stress response to homicide exposure is more relevant for adverse birth outcomes earlier in pregnancy, or that behavior changes due to homicide exposure have less time to influence the outcome of the pregnancy when exposure happens in the second trimester. Future studies could consider how these possible mechanisms may differ based on the timing of violence exposure.

Exposure to more than three homicides and exposure during all three exposure windows was associated with larger elevations in risk for SGA. These findings suggest that chronic exposure to homicide, especially during the pre-conception and early pregnancy period, is likely to have a more pronounced impact on risk of SGA compared to a single homicide. Additional research that focuses on creative identification strategies to study chronic violence exposure and reproductive health outcomes is needed to better understand these differences.

These findings add to the growing awareness of violence as a public health issue and the ties between the marginalization of certain communities and health disparities. However, given the small magnitudes of the estimates in this study, it is clear that the disparities in birth outcomes that exist in California can only be explained in very small part by acute variations in fatal community violence exposure. Non-fatal forms of community violence are much more prevalent (70), and therefore more work should be done to investigate the many potential sources of disadvantage, including community and interpersonal violence, that may contribute to disparities in adverse pregnancy outcomes. In order to advance our understanding of how

stressful experiences during pregnancy affect maternal health and fetal development, future research should examine other forms of community violence and the biologic and behavioral mechanisms that explain how homicide exposure could increase risk for adverse birth outcomes.

References

1. Culhane JF, Elo IT. Neighborhood context and reproductive health. *Am J Obstet Gynecol*. 2005 May 1;192(5, Supplement):S22–9.
2. Neggers Y, Goldenberg R, Cliver S, Hauth J. Effects of domestic violence on preterm birth and low birth weight. *Acta Obstet Gynecol Scand*. 2004 Jan 1;83(5):455–60.
3. Shah PS, Shah J. Maternal Exposure to Domestic Violence and Pregnancy and Birth Outcomes: A Systematic Review and Meta-Analyses. *J Womens Health*. 2010 Oct 4;19(11):2017–31.
4. Yost NP, Bloom SL, McIntire DD, Leveno KJ. A Prospective Observational Study of Domestic Violence During Pregnancy. *Obstet Gynecol*. 2005 Jul;106(1):61.
5. Wadhwa PD, Entringer S, Buss C, Lu MC. The Contribution of Maternal Stress to Preterm Birth: Issues and Considerations. *Clin Perinatol*. 2011 Sep;38(3):351–84.
6. Galin J, Abrams B, Leonard SA, Matthay EC, Goin DE, Ahern J. Living in Violent Neighbourhoods is Associated with Gestational Weight Gain Outside the Recommended Range. *Paediatr Perinat Epidemiol*. 2017 Jan 1;31(1):37–46.
7. Huang A, Ji Z, Zhao W, Hu H, Yang Q, Chen D. Rate of gestational weight gain and preterm birth in relation to prepregnancy body mass indices and trimester: a follow-up study in China. *Reprod Health*. 2016 Aug 12;13(1):93.
8. Bryant AS, Worjolah A, Caughey AB, Washington AE. Racial/ethnic disparities in obstetric outcomes and care: prevalence and determinants. *Am J Obstet Gynecol*. 2010 Apr;202(4):335–43.
9. MacDorman MF. Race and ethnic disparities in fetal mortality, preterm birth, and infant mortality in the United States: an overview. *Semin Perinatol*. 2011 Aug;35(4):200–8.
10. Culhane JF, Goldenberg RL. Racial Disparities in Preterm Birth. *Semin Perinatol*. 2011 Aug 1;35(4):234–9.
11. Osypuk TL, Acevedo-Garcia D. Are racial disparities in preterm birth larger in hypersegregated areas? *Am J Epidemiol*. 2008 Jun 1;167(11):1295–304.
12. Hussein M, Roux D, V A, Mujahid MS, Hastert TA, Kershaw KN, et al. Unequal Exposure or Unequal Vulnerability? Contributions of Neighborhood Conditions and Cardiovascular Risk Factors to Socioeconomic Inequality in Incident Cardiovascular Disease in the Multi-Ethnic Study of Atherosclerosis. *Am J Epidemiol*. 2018 Jul 1;187(7):1424–37.
13. Massey DS, Denton NA. Hypersegregation in U.S. Metropolitan Areas: Black and Hispanic Segregation Along Five Dimensions. *Demography*. 1989 Aug 1;26(3):373–91.

14. Self RO. American Babylon: Race and the Struggle for Postwar Oakland [Internet]. STU-Student edition. Princeton University Press; 2003 [cited 2018 Feb 9]. Available from: <http://www.jstor.org/stable/j.ctt5hhq2x>
15. Wilkerson I. The warmth of other suns: The epic story of America's great migration. Vintage; 2011.
16. Acevedo-Garcia D. Residential segregation and the epidemiology of infectious diseases. *Soc Sci Med* 1982. 2000 Oct;51(8):1143–61.
17. Fang J, Madhavan S, Bosworth W, Alderman MH. Residential segregation and mortality in New York City. *Soc Sci Med*. 1998 Aug 16;47(4):469–76.
18. Margerison-Zilko C, Cubbin C, Jun J, Marchi K, Fingar K, Braveman P. Beyond the Cross-Sectional: Neighborhood Poverty Histories and Preterm Birth. *Am J Public Health*. 2015 Apr 16;105(6):1174–80.
19. Crouch JL, Hanson RF, Saunders BE, Kilpatrick DG, Resnick HS. Income, race/ethnicity, and exposure to violence in youth: Results from the national survey of adolescents. *J Community Psychol*. 2000 Nov 1;28(6):625–41.
20. Hatch SL, Dohrenwend BP. Distribution of traumatic and other stressful life events by race/ethnicity, gender, SES and age: a review of the research. *Am J Community Psychol*. 2007 Dec;40(3–4):313–32.
21. Institute of Medicine. Preterm Birth: Causes, Consequences, and Prevention. National Academies Press; 2007.
22. Almond D, Currie J. Killing Me Softly: The Fetal Origins Hypothesis. *J Econ Perspect*. 2011 Sep;25(3):153–72.
23. Barker DJP, Eriksson JG, Forsén T, Osmond C. Fetal origins of adult disease: strength of effects and biological basis. *Int J Epidemiol*. 2002 Dec 1;31(6):1235–9.
24. Calkins K, Devaskar SU. Fetal Origins of Adult Disease. *Curr Probl Pediatr Adolesc Health Care*. 2011 Jul 1;41(6):158–76.
25. Almond D, Currie J, Duque V. Childhood Circumstances and Adult Outcomes: Act II. *J Econ Lit*. 2018 Dec;56(4):1360–446.
26. Barker DJP. The Developmental Origins of Adult Disease. *J Am Coll Nutr*. 2004 Dec 1;23(sup6):588S-595S.
27. Brady SS. Lifetime Community Violence Exposure and Health Risk Behavior among Young Adults in College. *J Adolesc Health*. 2006 Oct 1;39(4):610–3.

28. Vermeiren R, Schwab-Stone M, Deboutte D, Leckman PE, Ruchkin V. Violence exposure and substance use in adolescents: findings from three countries. *Pediatrics*. 2003 Mar;111(3):535–40.
29. Voisin DR, Hotton AL, Neilands TB. Testing Pathways Linking Exposure to Community Violence and Sexual Behaviors Among African American Youth. *J Youth Adolesc*. 2014 Sep;43(9):1513–26.
30. Andrews WW, Goldenberg RL, Mercer B, Iams J, Meis P, Moawad A, et al. The Preterm Prediction Study: association of second-trimester genitourinary chlamydia infection with subsequent spontaneous preterm birth. *Am J Obstet Gynecol*. 2000 Sep;183(3):662–8.
31. Haas JS, Fuentes-Afflick E, Stewart AL, Jackson RA, Dean ML, Brawarsky P, et al. Prepregnancy health status and the risk of preterm delivery. *Arch Pediatr Adolesc Med*. 2005 Jan;159(1):58–63.
32. Hegaard HK, Hedegaard M, Damm P, Ottesen B, Petersson K, Henriksen TB. Leisure time physical activity is associated with a reduced risk of preterm delivery. *Am J Obstet Gynecol*. 2008 Feb;198(2):180.e1-5.
33. Juhl M, Andersen PK, Olsen J, Madsen M, Jørgensen T, Nøhr EA, et al. Physical exercise during pregnancy and the risk of preterm birth: a study within the Danish National Birth Cohort. *Am J Epidemiol*. 2008 Apr 1;167(7):859–66.
34. Mann JR, McDermott S, Gill T. Sexually transmitted infection is associated with increased risk of preterm birth in South Carolina women insured by Medicaid. *J Matern-Fetal Neonatal Med Off J Eur Assoc Perinat Med Fed Asia Ocean Perinat Soc Int Soc Perinat Obstet*. 2010 Jun;23(6):563–8.
35. Newton ER. Preterm labor, preterm premature rupture of membranes, and chorioamnionitis. *Clin Perinatol*. 2005 Sep;32(3):571–600.
36. Sibai BM, Caritis SN, Hauth JC, MacPherson C, VanDorsten JP, Klebanoff M, et al. Preterm delivery in women with pregestational diabetes mellitus or chronic hypertension relative to women with uncomplicated pregnancies. The National institute of Child health and Human Development Maternal- Fetal Medicine Units Network. *Am J Obstet Gynecol*. 2000 Dec;183(6):1520–4.
37. Solomon CG, Willett WC, Carey VJ, Rich-Edwards J, Hunter DJ, Colditz GA, et al. A prospective study of pregravid determinants of gestational diabetes mellitus. *JAMA*. 1997 Oct 1;278(13):1078–83.
38. Brown JR, Hill HM, Lambert SF. Traumatic stress symptoms in women exposed to community and partner violence. *J Interpers Violence*. 2005 Nov;20(11):1478–94.
39. Suglia SF, Staudenmayer J, Cohen S, Enlow MB, Rich-Edwards JW, Wright RJ. Cumulative Stress and Cortisol Disruption among Black and Hispanic Pregnant Women in an Urban Cohort. *Psychol Trauma Theory Res Pract Policy*. 2010 Dec 1;2(4):326–34.

40. Kramer MS, Lydon J, Goulet L, Kahn S, Dahhou M, Platt RW, et al. Maternal stress/distress, hormonal pathways and spontaneous preterm birth. *Paediatr Perinat Epidemiol*. 2013 May;27(3):237–46.
41. Hobel CJ, Dunkel-Schetter C, Roesch SC, Castro LC, Arora CP. Maternal plasma corticotropin-releasing hormone associated with stress at 20 weeks' gestation in pregnancies ending in preterm delivery. *Am J Obstet Gynecol*. 1999 Jan 1;180(1, Supplement 2):S257–63.
42. Kramer MS, Lydon J, Séguin L, Goulet L, Kahn SR, McNamara H, et al. Stress Pathways to Spontaneous Preterm Birth: The Role of Stressors, Psychological Distress, and Stress Hormones. *Am J Epidemiol*. 2009 Jun 1;169(11):1319–26.
43. Kramer MR, Hogue CR. What causes racial disparities in very preterm birth? A biosocial perspective. *Epidemiol Rev*. 2009;31:84–98.
44. Wadhwa PD, Culhane JF, Rauh V, Barve SS, Hogan V, Sandman CA, et al. Stress, infection and preterm birth: a biobehavioural perspective. *Paediatr Perinat Epidemiol*. 2001 Jul;15 Suppl 2:17–29.
45. Mendez DD, Hogan VK, Culhane JF. Institutional racism, neighborhood factors, stress, and preterm birth. *Ethn Health*. 2014;19(5):479–99.
46. Nkansah-Amankra S, Dhawain A, Hussey JR, Luchok KJ. Maternal Social Support and Neighborhood Income Inequality as Predictors of Low Birth Weight and Preterm Birth Outcome Disparities: Analysis of South Carolina Pregnancy Risk Assessment and Monitoring System Survey, 2000–2003. *Matern Child Health J*. 2010 Sep 1;14(5):774–85.
47. Ponce NA, Hoggatt KJ, Wilhelm M, Ritz B. Preterm Birth: The Interaction of Traffic-related Air Pollution with Economic Hardship in Los Angeles Neighborhoods. *Am J Epidemiol*. 2005 Jul 15;162(2):140–8.
48. O'Campo P, Burke JG, Culhane J, Elo IT, Eyster J, Holzman C, et al. Neighborhood Deprivation and Preterm Birth among Non-Hispanic Black and White Women in Eight Geographic Areas in the United States. *Am J Epidemiol*. 2008 Jan 15;167(2):155–63.
49. Giurgescu C, Zenk SN, Dancy BL, Park CG, Dieber W, Block R. Relationships among Neighborhood Environment, Racial Discrimination, Psychological Distress, and Preterm Birth in African American Women. *J Obstet Gynecol Neonatal Nurs*. 2012 Nov 1;41(6):E51–61.
50. Morello-Frosch R, Shenassa ED. The Environmental “Riskscape” and Social Inequality: Implications for Explaining Maternal and Child Health Disparities. *Environ Health Perspect*. 2006 Aug;114(8):1150–3.
51. Messer LC, Kaufman JS, Dole N, Savitz DA, Laraia BA. Neighborhood crime, deprivation, and preterm birth. *Ann Epidemiol*. 2006 Jun;16(6):455–62.

52. Messer LC, Kaufman JS, Dole N, Herring A, Laraia BA. Violent crime exposure classification and adverse birth outcomes: a geographically-defined cohort study. *Int J Health Geogr*. 2006 May 17;5:22.
53. Masi CM, Hawkley LC, Harry Piotrowski Z, Pickett KE. Neighborhood economic disadvantage, violent crime, group density, and pregnancy outcomes in a diverse, urban population. *Soc Sci Med*. 2007 Dec 1;65(12):2440–57.
54. Koppensteiner MF, Manacorda M. Violence and birth outcomes: Evidence from homicides in Brazil. *J Dev Econ*. 2016;119:16–33.
55. Torche F, Villarreal A. Prenatal Exposure to Violence and Birth Weight in Mexico: Selectivity, Exposure, and Behavioral Responses. *Am Sociol Rev*. 2014 Oct 1;79(5):966–92.
56. Ahern J, Cerdá M, Lippman SA, Tardiff KJ, Vlahov D, Galea S. Navigating non-positivity in neighbourhood studies: an analysis of collective efficacy and violence. *J Epidemiol Community Health*. 2013 Feb;67(2):159–65.
57. Messer LC, Oakes JM, Mason S. Effects of Socioeconomic and Racial Residential Segregation on Preterm Birth: A Cautionary Tale of Structural Confounding. *Am J Epidemiol*. 2010 Mar 15;171(6):664–73.
58. Sampson RJ, Sharkey P. Neighborhood selection and the social reproduction of concentrated racial inequality. *Demography*. 2008 Feb 1;45(1):1–29.
59. Barnett AG. Time-Dependent Exposures and the Fixed-Cohort Bias. *Environ Health Perspect*. 2011 Oct;119(10):a422–3.
60. Talge NM, Mudd LM, Sikorskii A, Basso O. United States Birth Weight Reference Corrected For Implausible Gestational Age Estimates. *Pediatrics*. 2014 May 1;133(5):844–53.
61. Rysavy MA, Li L, Bell EF, Das A, Hintz SR, Stoll BJ, et al. Between-Hospital Variation in Treatment and Outcomes in Extremely Preterm Infants. *N Engl J Med*. 2015 May 7;372(19):1801–11.
62. MatchIt: Nonparametric Preprocessing for Parametric Causal Inference | Ho | Journal of Statistical Software. [cited 2017 Nov 2]; Available from: <https://www.jstatsoft.org/article/view/v042i08>
63. Stuart EA. Matching methods for causal inference: A review and a look forward. *Stat Sci Rev J Inst Math Stat*. 2010 Feb 1;25(1):1–21.
64. Robins J. A new approach to causal inference in mortality studies with a sustained exposure period—application to control of the healthy worker survivor effect. *Math Model*. 1986 Jan 1;7(9):1393–512.

65. Laan MJ van der, Robins JM. Unified Methods for Censored Longitudinal Data and Causality. Springer Science & Business Media; 2003. 424 p.
66. White H. A Heteroskedasticity-Consistent Covariance Matrix Estimator and a Direct Test for Heteroskedasticity. *Econometrica*. 1980;48(4):817–38.
67. Sanderson E, Macdonald-Wallis C, Davey Smith G. Negative control exposure studies in the presence of measurement error: implications for attempted effect estimate calibration. *Int J Epidemiol*. 2018 01;47(2):587–96.
68. Wong D. The modifiable areal unit problem (MAUP). *SAGE Handb Spat Anal*. 2009;105–123.
69. Barradas DT, Dietz PM, Pearl M, England LJ, Callaghan WM, Kharrazi M. Validation of Obstetric Estimate Using Early Ultrasound: 2007 California Birth Certificates. *Paediatr Perinat Epidemiol*. 28(1):3–10.
70. Krug EG, Mercy JA, Dahlberg LL, Zwi AB. The world report on violence and health. *The Lancet*. 2002 Oct 5;360(9339):1083–8.

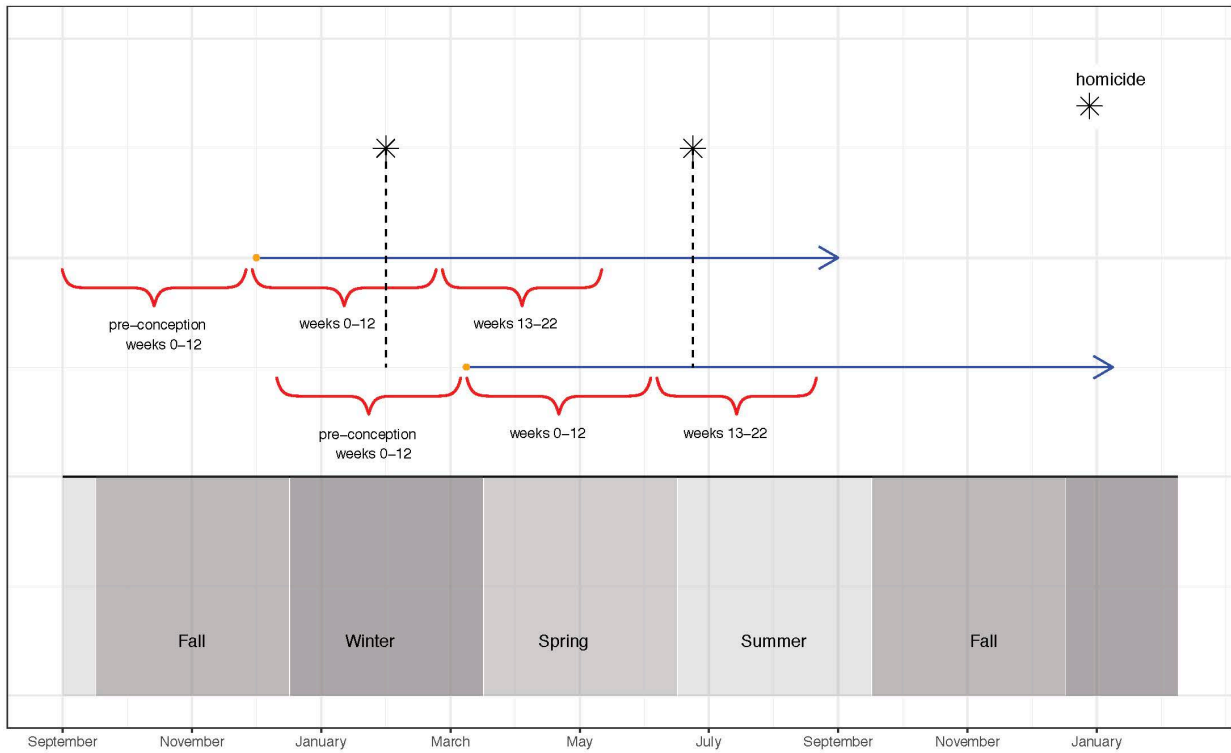
Table 1. Descriptive statistics of homicide exposure and birth outcomes overall and by race/ethnicity

	Complete case full data		Matched data for pre-conception exposure		Matched data for first trimester exposure		Matched data for second trimester exposure	
Total sample size	2,133,662		1,398,143		1,395,349		1,387,861	
	N	(%)	N	(%)	N	(%)	N	(%)
Exposed to pre-conception homicide								
All	175,079	8.2%	175,078	12.5%	173,977	12.5%	172,036	12.4%
White, NH	28,801	4.9%	28,801	9.7%	28,524	9.6%	27,974	9.5%
Black, NH	16,333	14.0%	16,333	17.3%	16,286	17.3%	16,196	17.3%
Asian, NH	14,452	5.5%	14,452	10.2%	14,307	10.1%	14,066	10.0%
Hispanic	110,960	10.0%	110,959	13.4%	110,360	13.4%	109,356	13.3%
Exposed to first trimester homicide								
All	185,489	8.7%	184,534	13.2%	185,489	13.3%	184,249	13.3%
White, NH	30,217	5.2%	29,907	10.1%	30,217	10.2%	29,900	10.1%
Black, NH	17,171	14.7%	17,131	18.1%	17,171	18.2%	17,123	18.3%
Asian, NH	15,199	5.8%	15,058	10.7%	15,199	10.8%	15,043	10.7%
Hispanic	118,120	10.7%	117,692	14.2%	118,120	14.3%	117,429	14.3%
Exposed to second trimester homicide								
All	144,324	6.8%	142,148	10.2%	143,583	10.3%	144,324	10.4%
White, NH	23,225	4.0%	22,618	7.6%	23,007	7.8%	23,225	7.9%
Black, NH	13,500	11.6%	13,414	14.2%	13,478	14.3%	13,500	14.4%
Asian, NH	11,866	4.5%	11,560	8.2%	11,758	8.3%	11,866	8.5%
Hispanic	91,990	8.3%	90,885	11.0%	91,621	11.1%	91,990	11.2%
Exposed to one or more homicides in all 3 exposure windows								
All	5,233	0.2%	5,233	0.4%	5,233	0.4%	5,233	0.4%
White, NH	346	0.1%	346	0.1%	346	0.1%	346	0.1%
Black, NH	907	0.8%	907	1.0%	907	1.0%	907	1.0%
Asian, NH	282	0.1%	282	0.2%	282	0.2%	282	0.2%
Hispanic	3,572	0.3%	3,572	0.4%	3,572	0.4%	3,572	0.4%
Exposed to 3 or more homicides								

All	20,225	0.9%	20,218	1.4%	20,225	1.4%	20,206	1.5%
White, NH	1,855	0.3%	1,851	0.6%	1,855	0.6%	1,853	0.6%
Black, NH	3,144	2.7%	3,144	3.3%	3,144	3.3%	3,141	3.4%
Asian, NH	1,298	0.5%	1,297	0.9%	1,298	0.9%	1,298	0.9%
Hispanic	13,450	1.2%	13,448	1.6%	13,450	1.6%	13,437	1.6%
Preterm								
All	189,704	8.9%	126,419	9.0%	126,083	9.0%	125,488	9.0%
White, NH	50,859	8.7%	26,191	8.8%	26,083	8.8%	25,921	8.8%
Black, NH	15,183	13.0%	12,460	13.2%	12,442	13.2%	12,398	13.2%
Asian, NH	23,225	8.9%	12,886	9.1%	12,862	9.1%	12,754	9.1%
Hispanic	94,710	8.5%	71,088	8.6%	70,900	8.6%	70,670	8.6%
SGA								
All	198,196	9.3%	132,530	9.5%	132,194	9.5%	131,475	9.5%
White, NH	43,516	7.4%	22,670	7.6%	22,568	7.6%	22,453	7.6%
Black, NH	17,935	15.3%	14,900	15.8%	14,885	15.8%	14,768	15.8%
Asian, NH	34,275	13.1%	18,626	13.2%	18,647	13.2%	18,479	13.2%
Hispanic	96,967	8.7%	72,751	8.8%	72,552	8.8%	72,267	8.8%

Note: The racial/ethnic groups for which we present separate categories have sufficient sample size to be presented on their own. There are mothers of other race/ethnicities in the "all" category.

Figure 1. Diagram illustrating how homicides are mapped to gestations according to the three exposure windows.



Note: The arrows represent two distinct pregnancies for women living in the same neighborhood. The start of the arrow corresponds to the week of conception, and the head of the arrow represents the week of birth. The brackets demonstrate each exposure window corresponding to the two gestations. The stars are homicides that occurred in the neighborhood, and the dotted line illustrates which exposure window each homicide would correspond to for the two different women.

Figure 2. Illustration of the creation of the matched samples for the pre-conception and first trimester analyses.

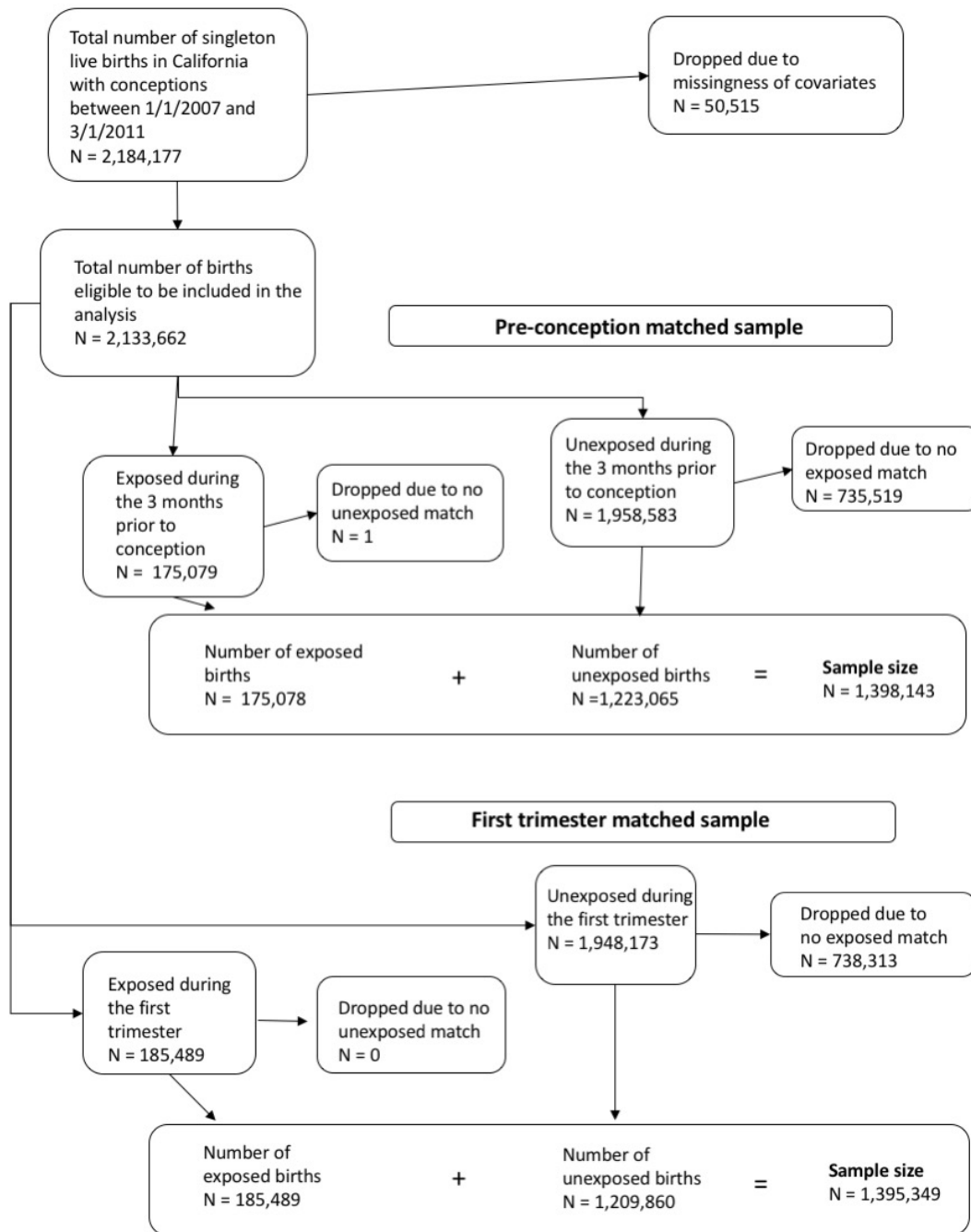


Figure 3. Illustration of the creation of the matched samples for the second trimester analyses.

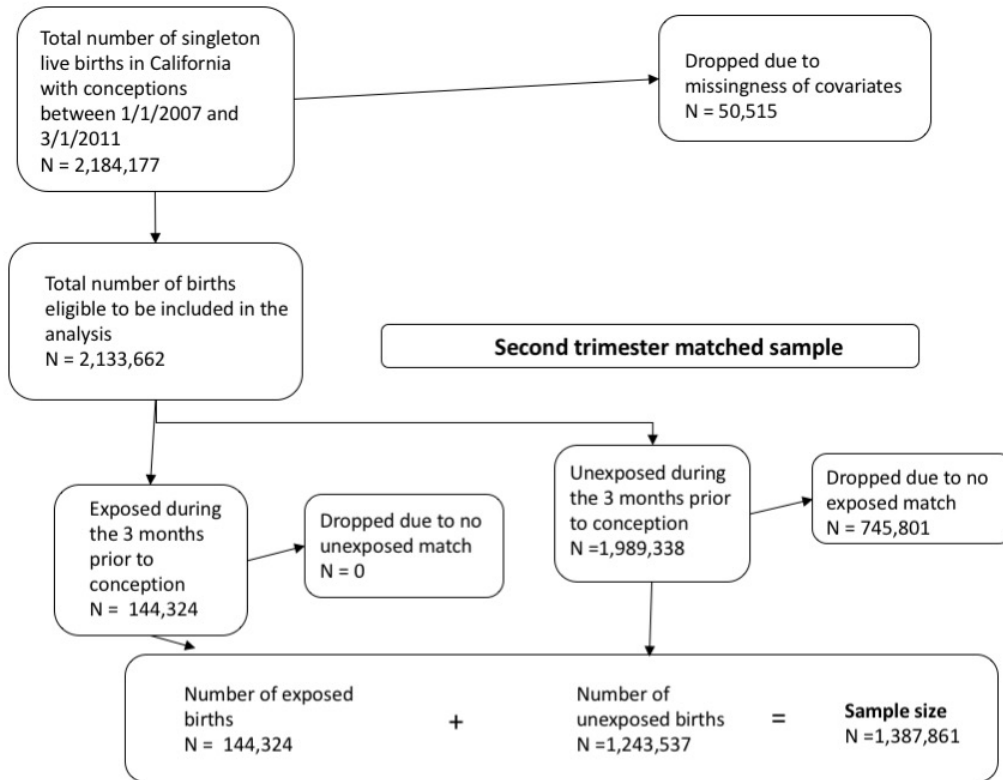


Figure 4. Estimated average treatment effect on the treated (ATT) of homicide exposure during the pre-conception period (1-12 weeks before conception), first trimester (weeks 0-12), second trimester (weeks 13-22), and the negative controls (0-12 weeks and 13-24 weeks after the pseudo-birth week) on risk of preterm birth and SGA in California, 2007-2011.

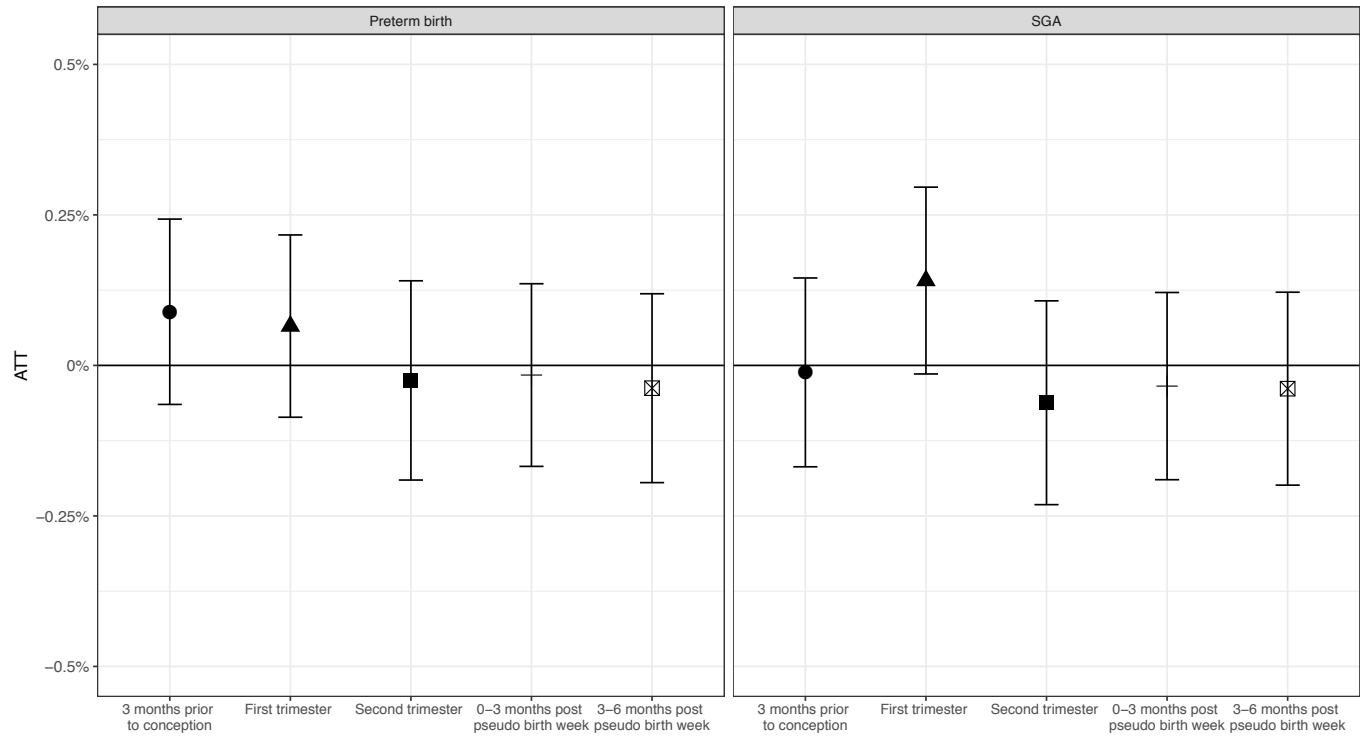
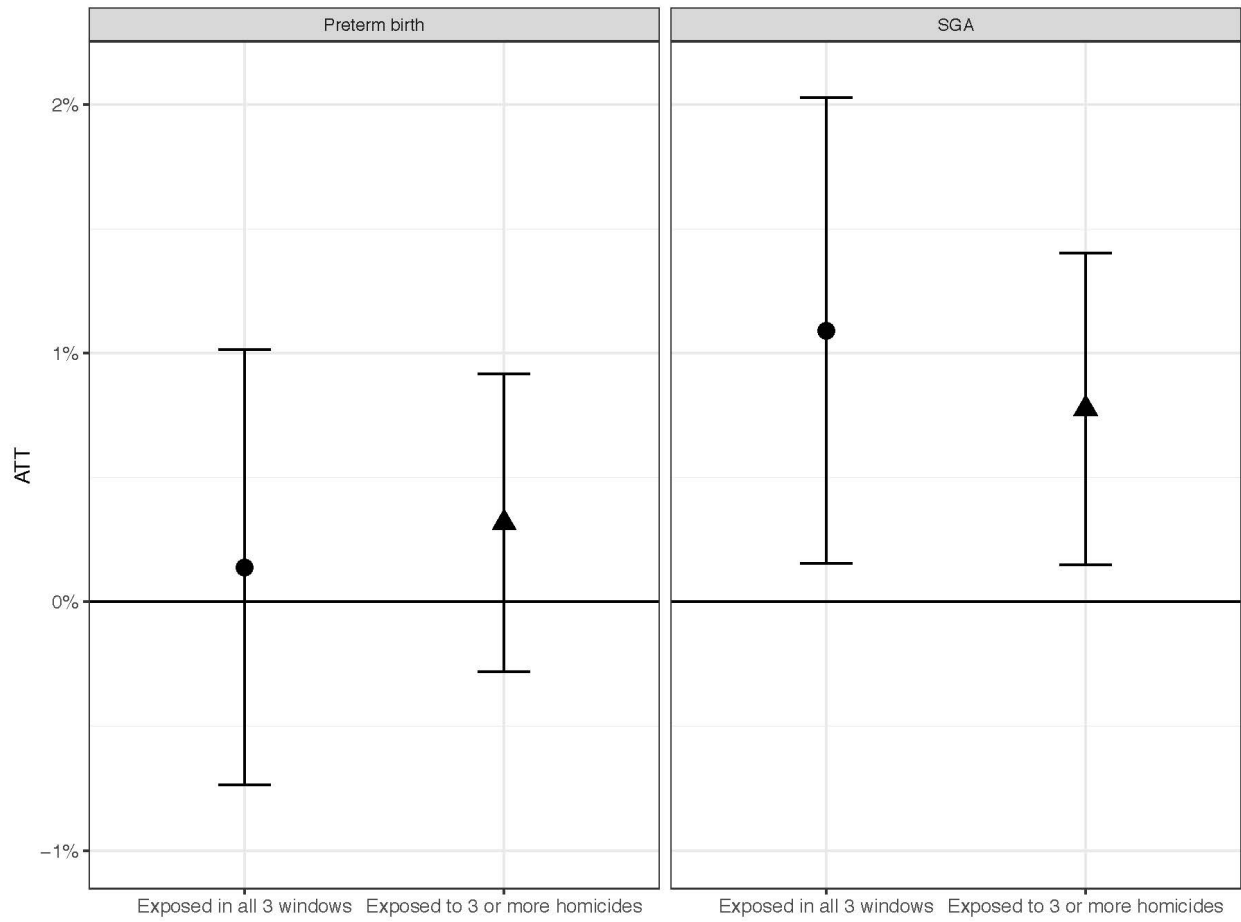
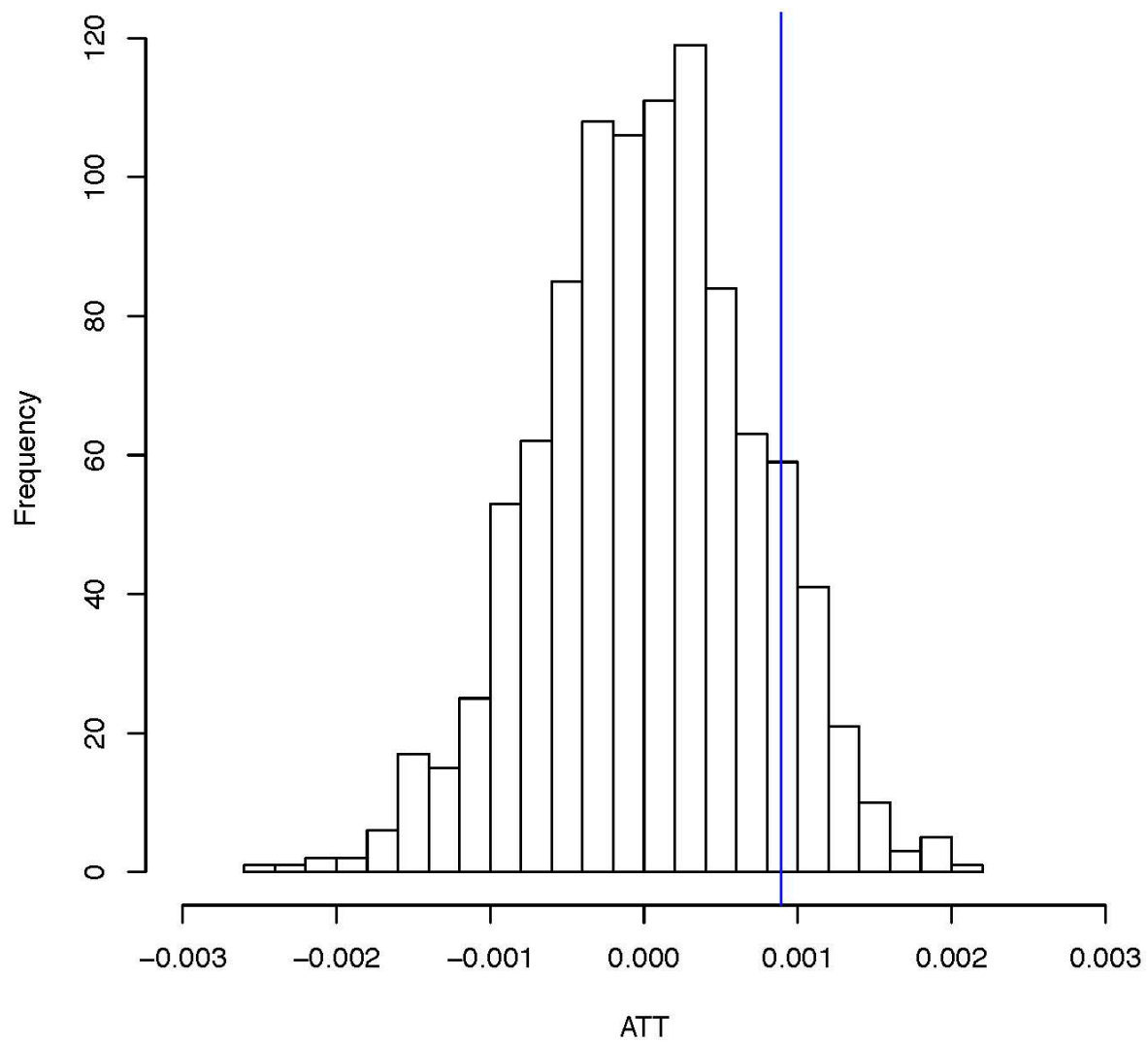


Figure 5. Estimated average treatment effect on the treated (ATT) of homicide exposure during all three exposure windows and exposed to at least three homicides on risk of preterm birth and SGA in California, 2007-2011.



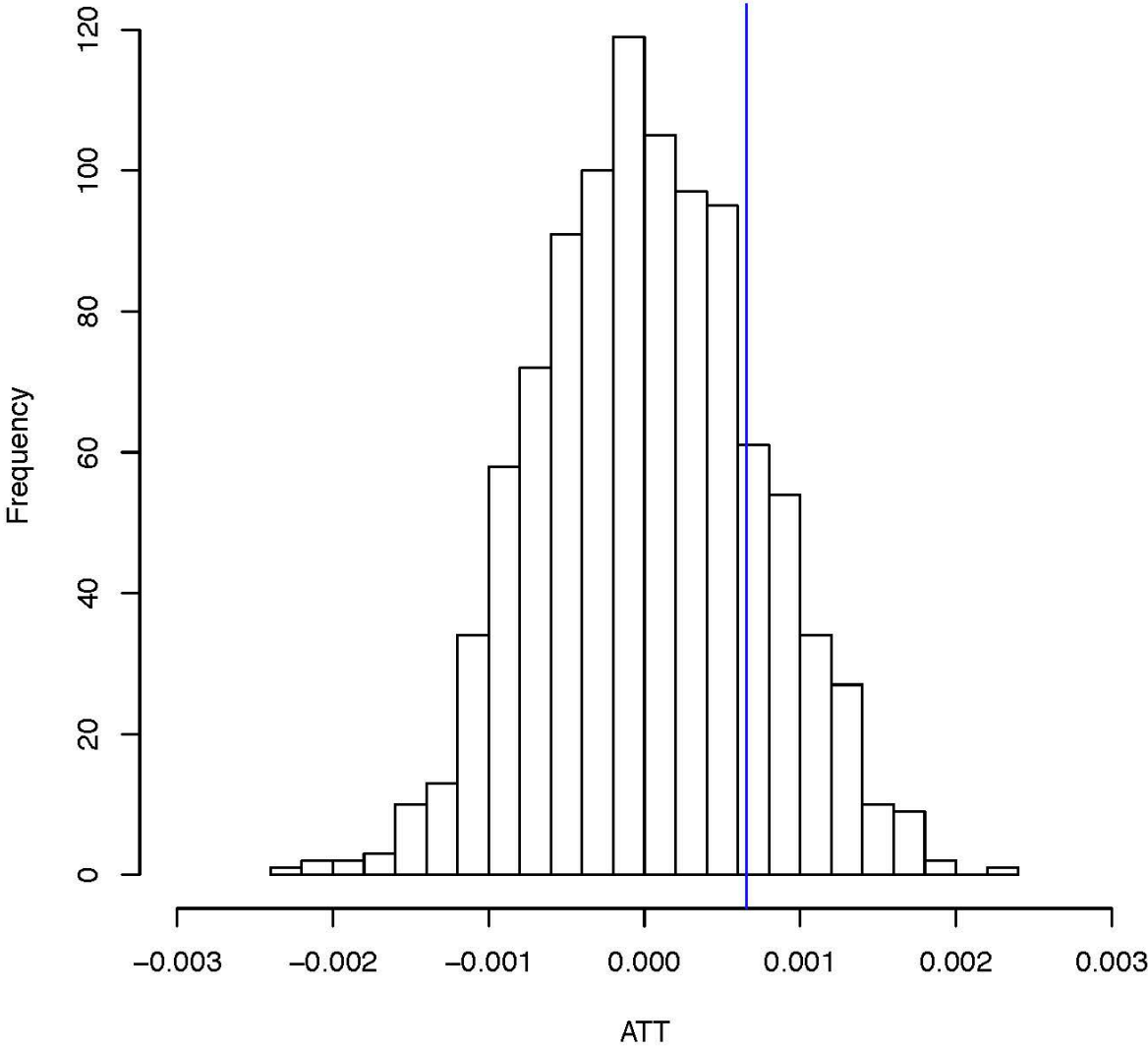
Supplemental Material

Supplemental Figure 1. Randomization inference for homicide exposure during the pre-conception period on risk of preterm birth.



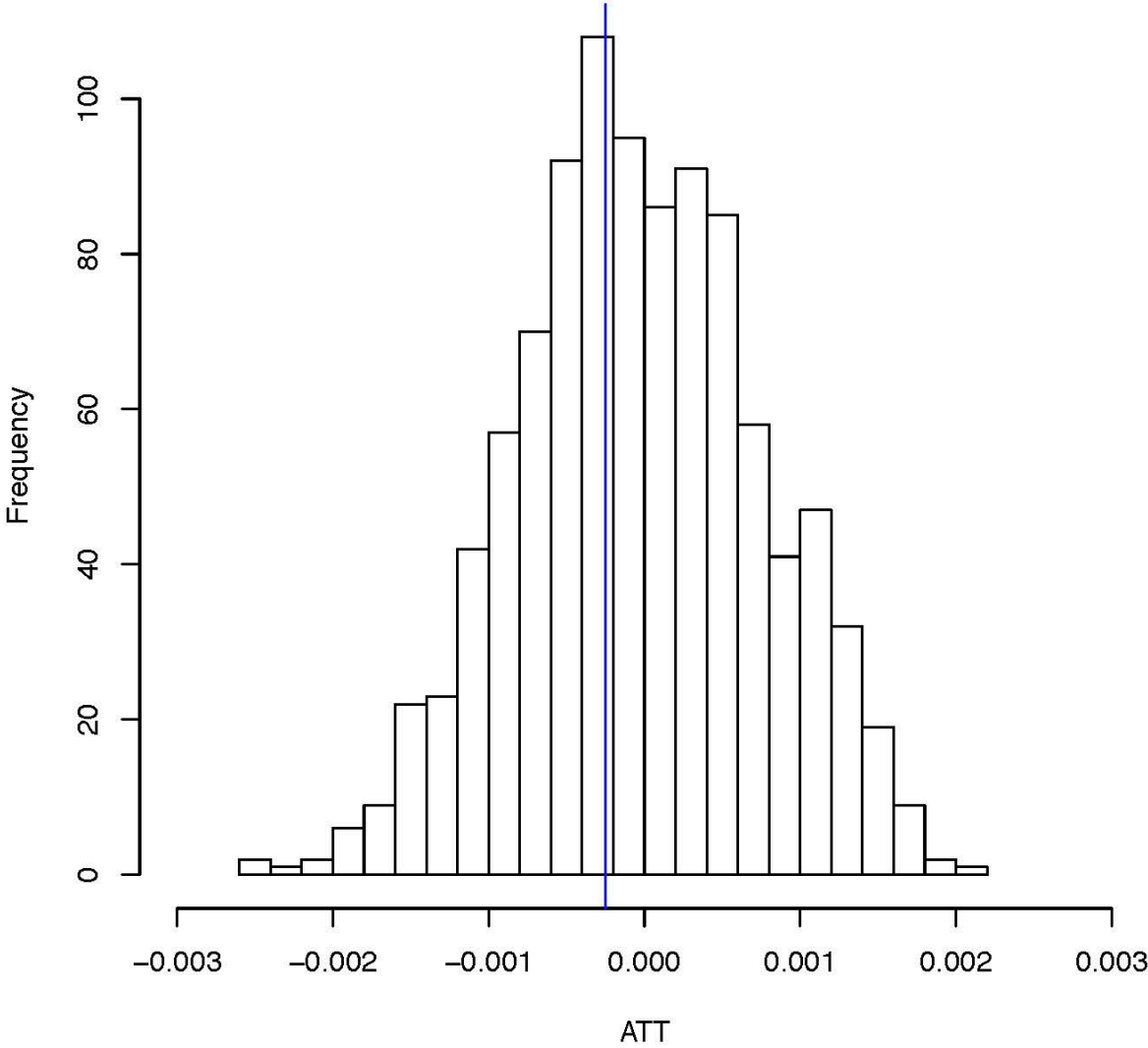
Note: The blue vertical line is the observed point estimate (0.09%) of the association of pre-conception homicide exposure and risk of preterm birth.

Supplemental Figure 2. Randomization inference for homicide exposure during the first trimester on risk of preterm birth.



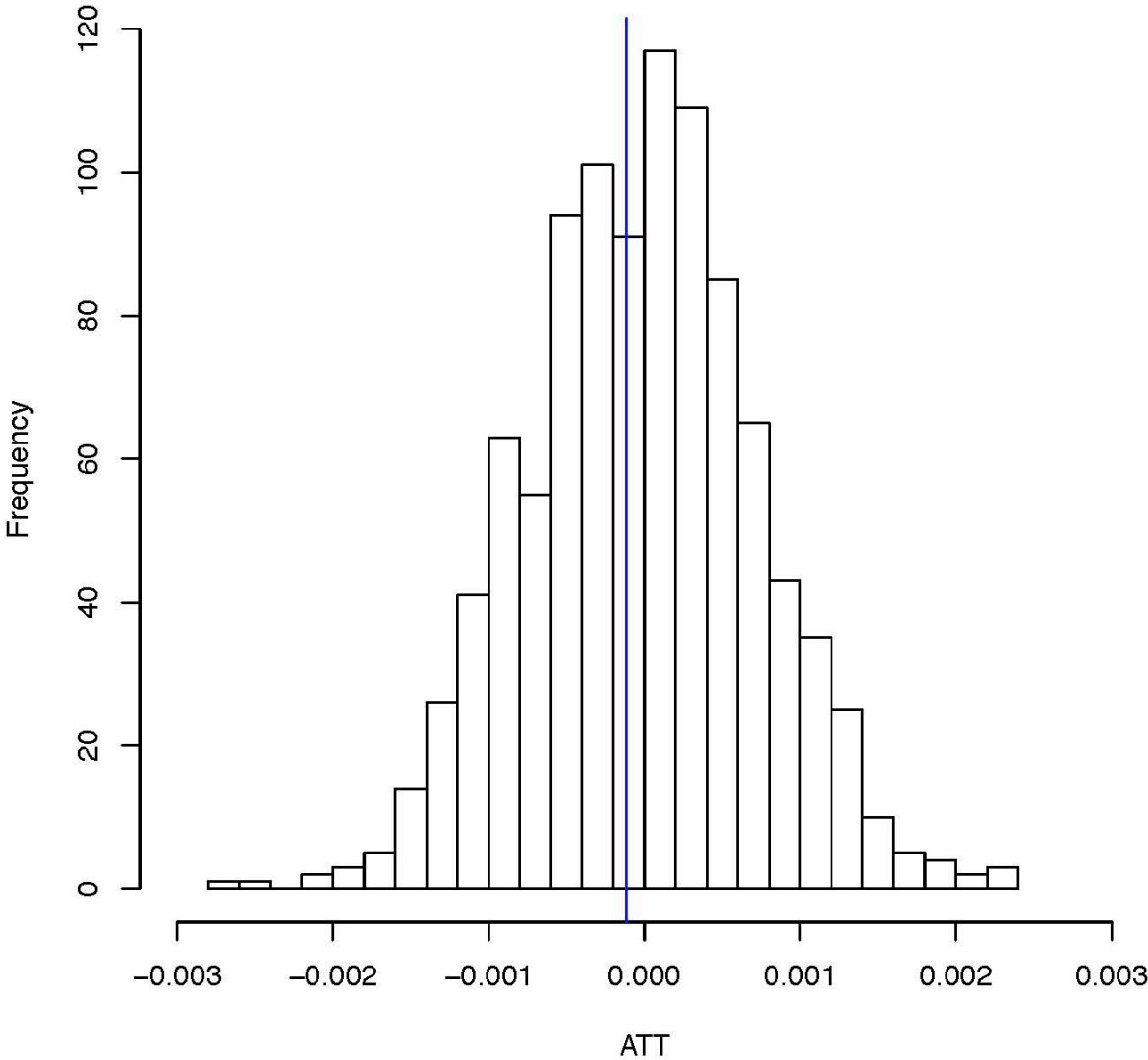
Note: The blue vertical line is the observed point estimate (0.07%) of the association of first trimester homicide exposure and risk of preterm birth.

Supplemental Figure 3. Randomization inference for homicide exposure during the second trimester on risk of preterm birth.



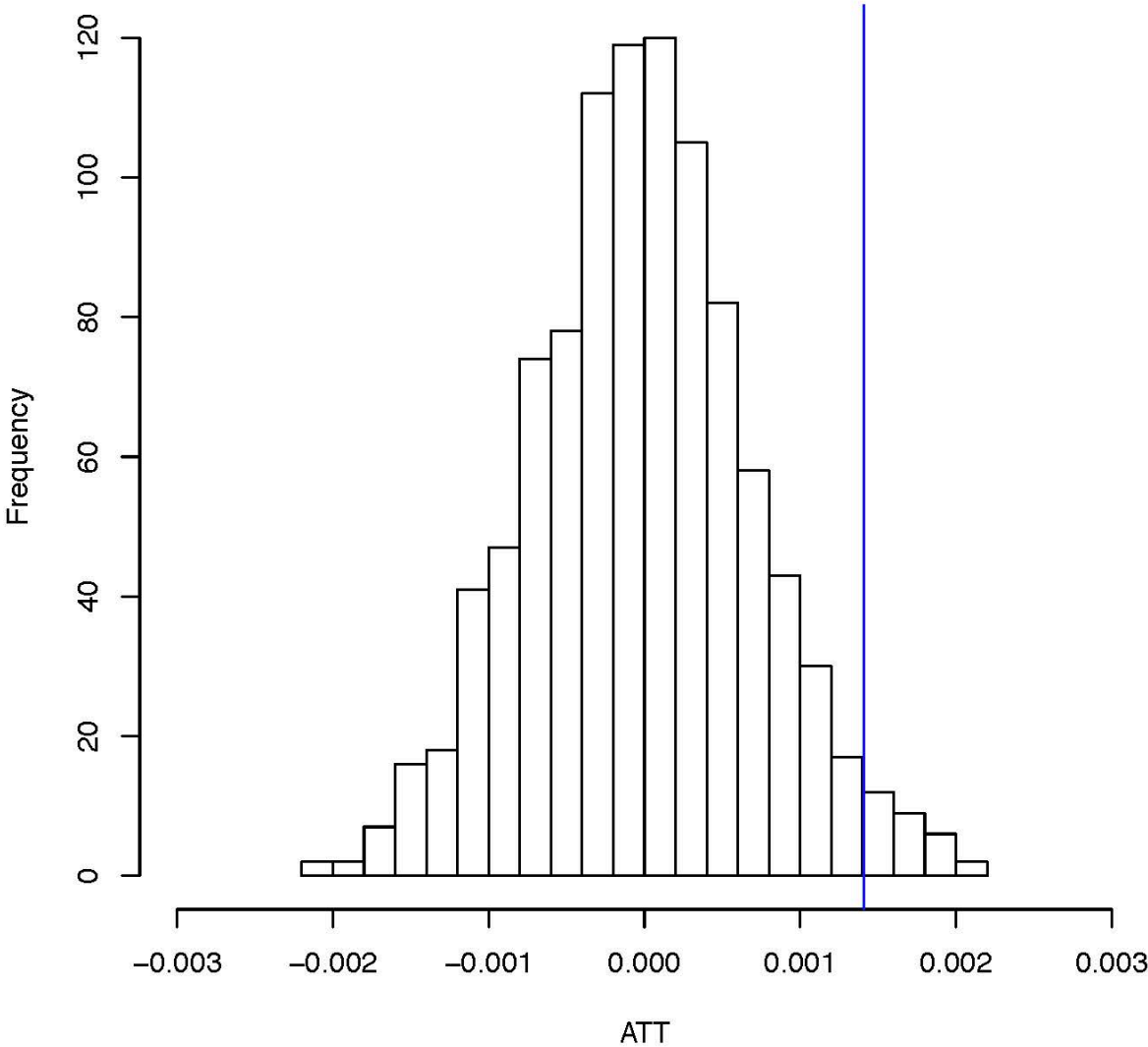
Note: The blue vertical line is the observed point estimate (-0.02%) of the association of second trimester homicide exposure and risk of preterm birth.

Supplemental Figure 4. Randomization inference for homicide exposure during the pre-conception period on risk of SGA.



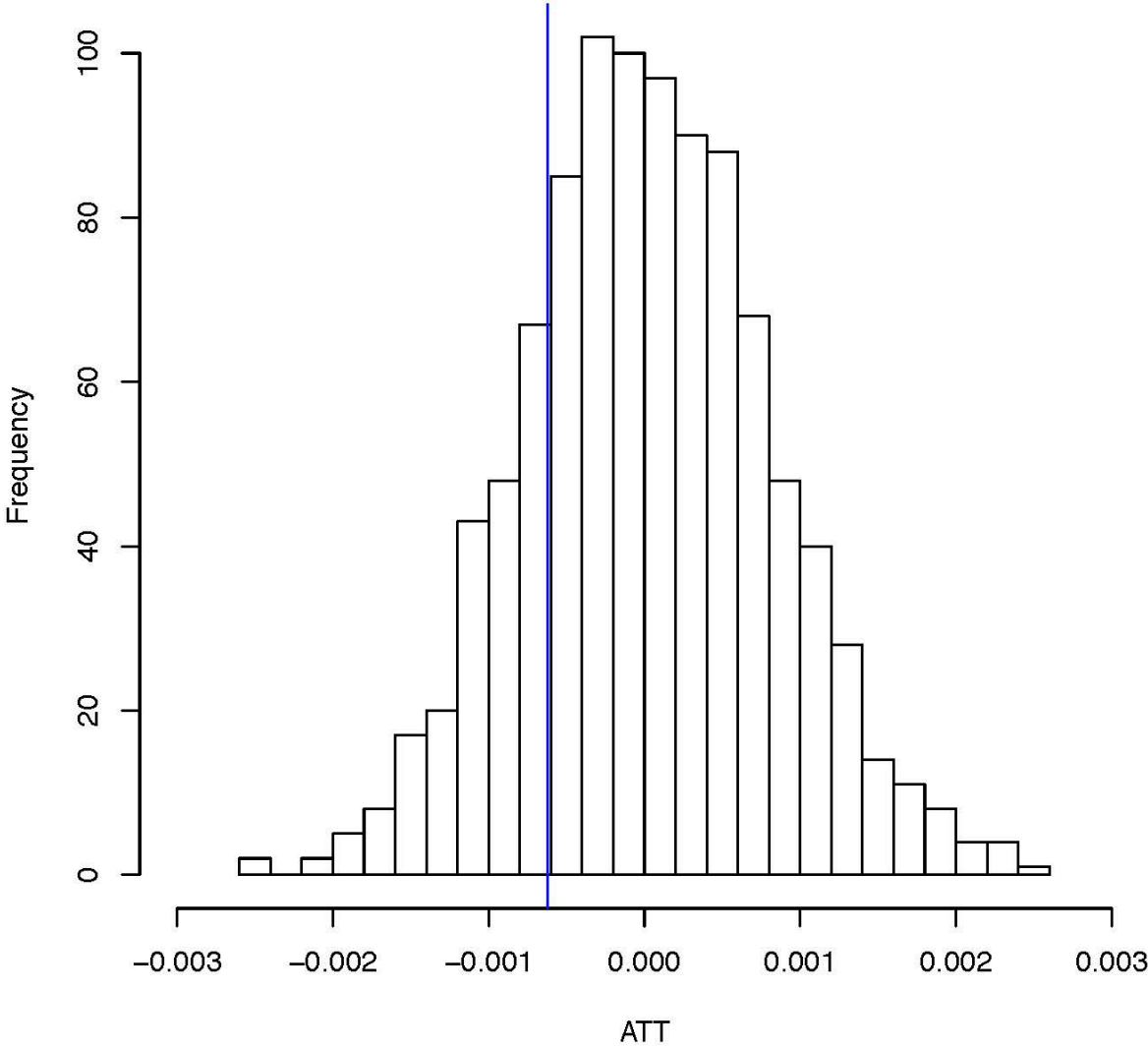
Note: The blue vertical line is the observed point estimate (-0.01%) of the association of pre-conception homicide exposure and risk of SGA.

Supplemental Figure 5. Randomization inference for homicide exposure during the first trimester on risk of SGA.



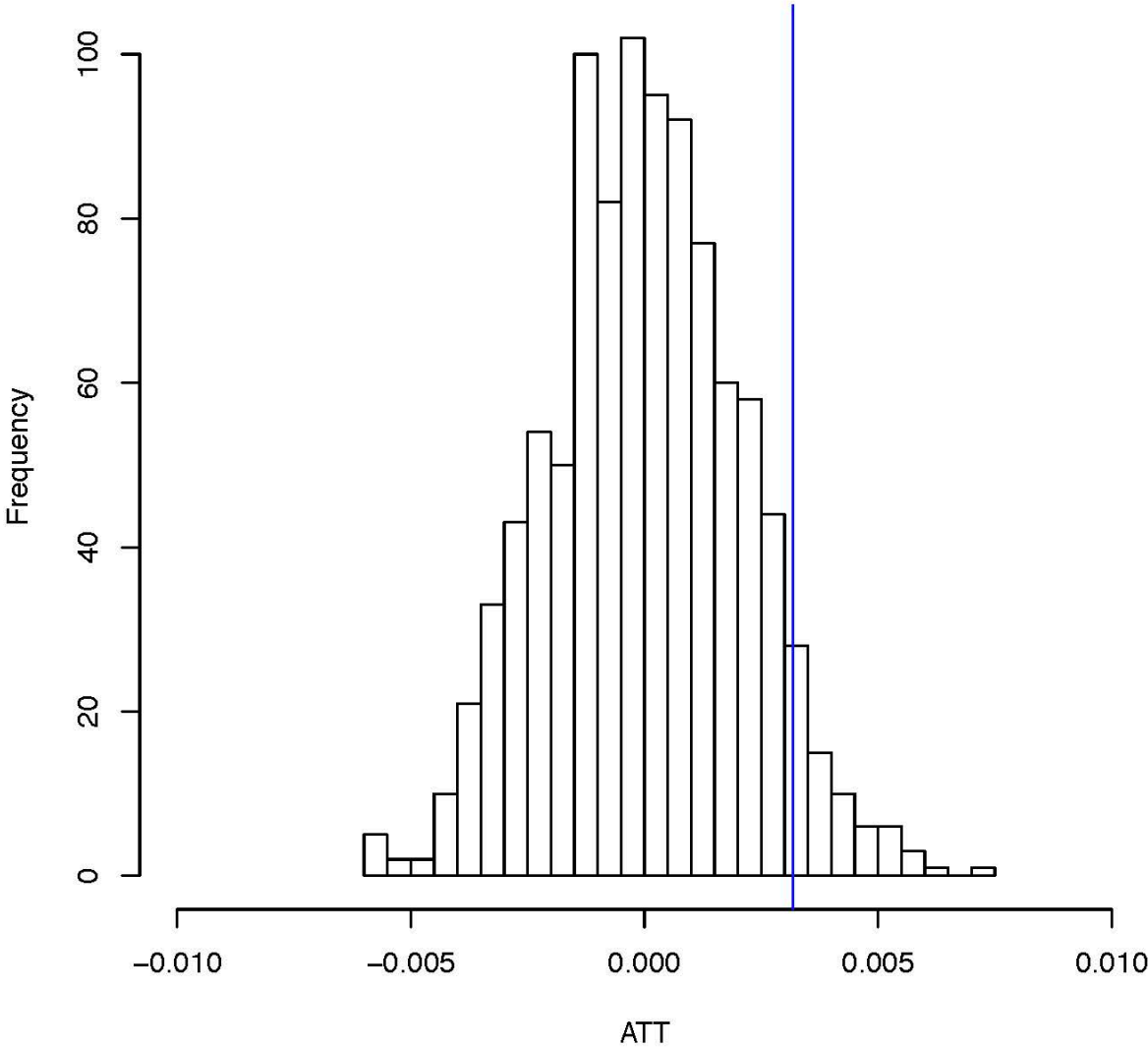
Note: The blue vertical line is the observed point estimate (0.14%) of the association of first trimester homicide exposure and risk of SGA.

Supplemental Figure 6. Randomization inference for homicide exposure during the second trimester on risk of SGA.



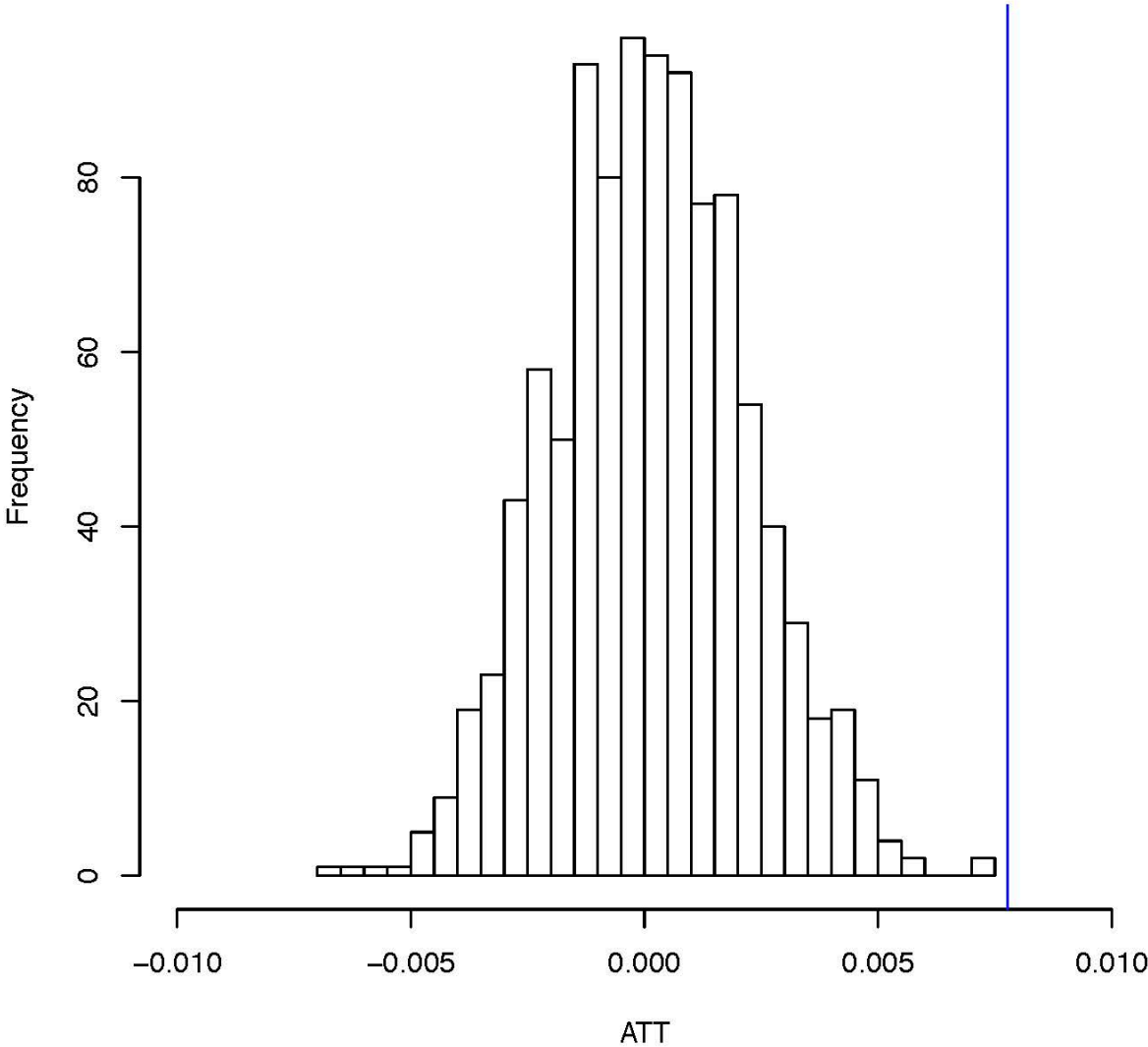
Note: The blue vertical line is the observed point estimate (-0.06%) of the association of second trimester homicide exposure and risk of SGA.

Supplemental Figure 7. Randomization inference for three or more homicides during the pre-conception period, first trimester, or second trimester on risk of preterm birth.



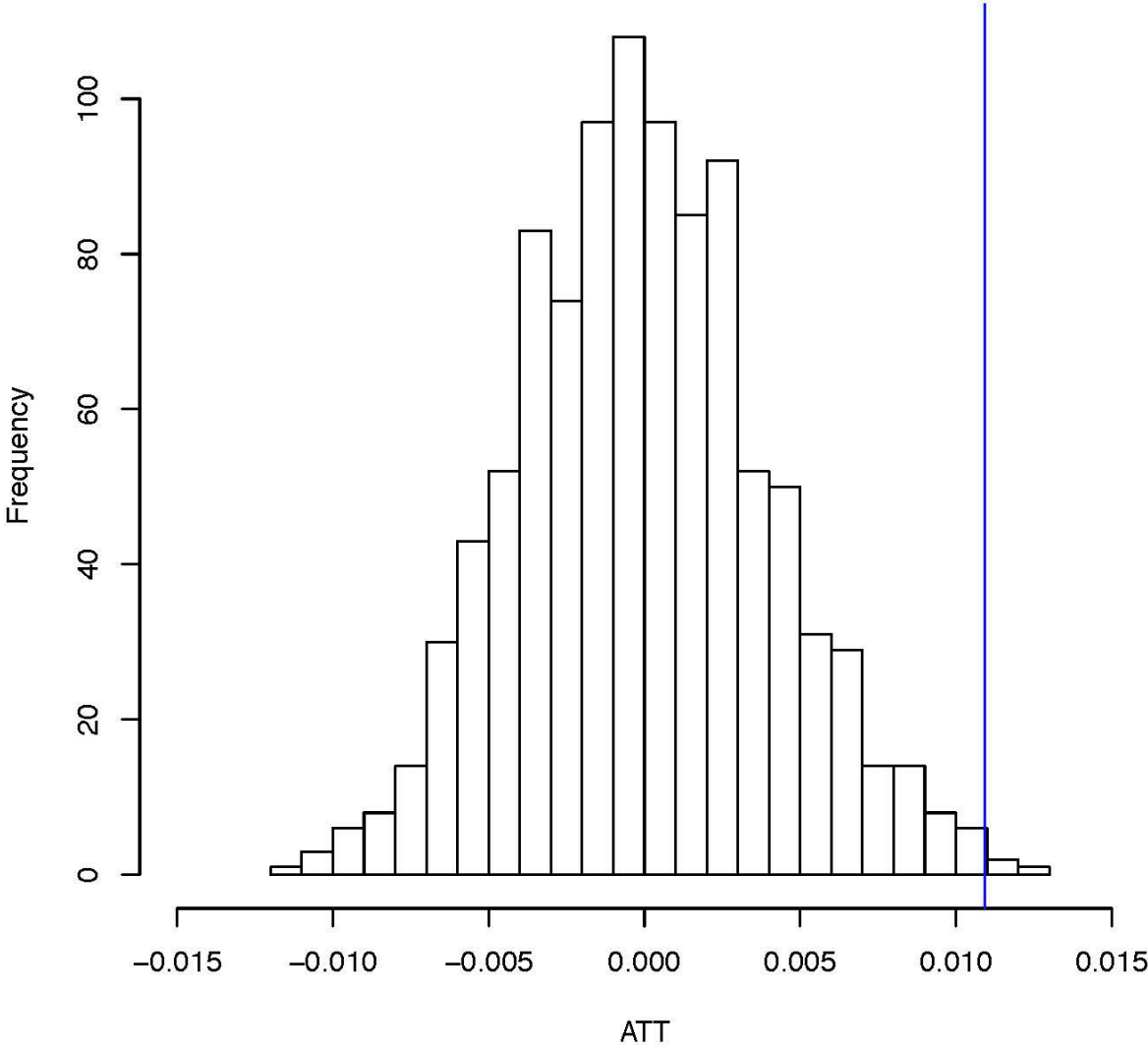
Note: The blue vertical line is the observed point estimate (0.32%) of the association of exposure to three or more homicides and risk of preterm birth.

Supplemental Figure 8. Randomization inference for three or more homicides during the pre-conception period, first trimester, or second trimester on risk of SGA.



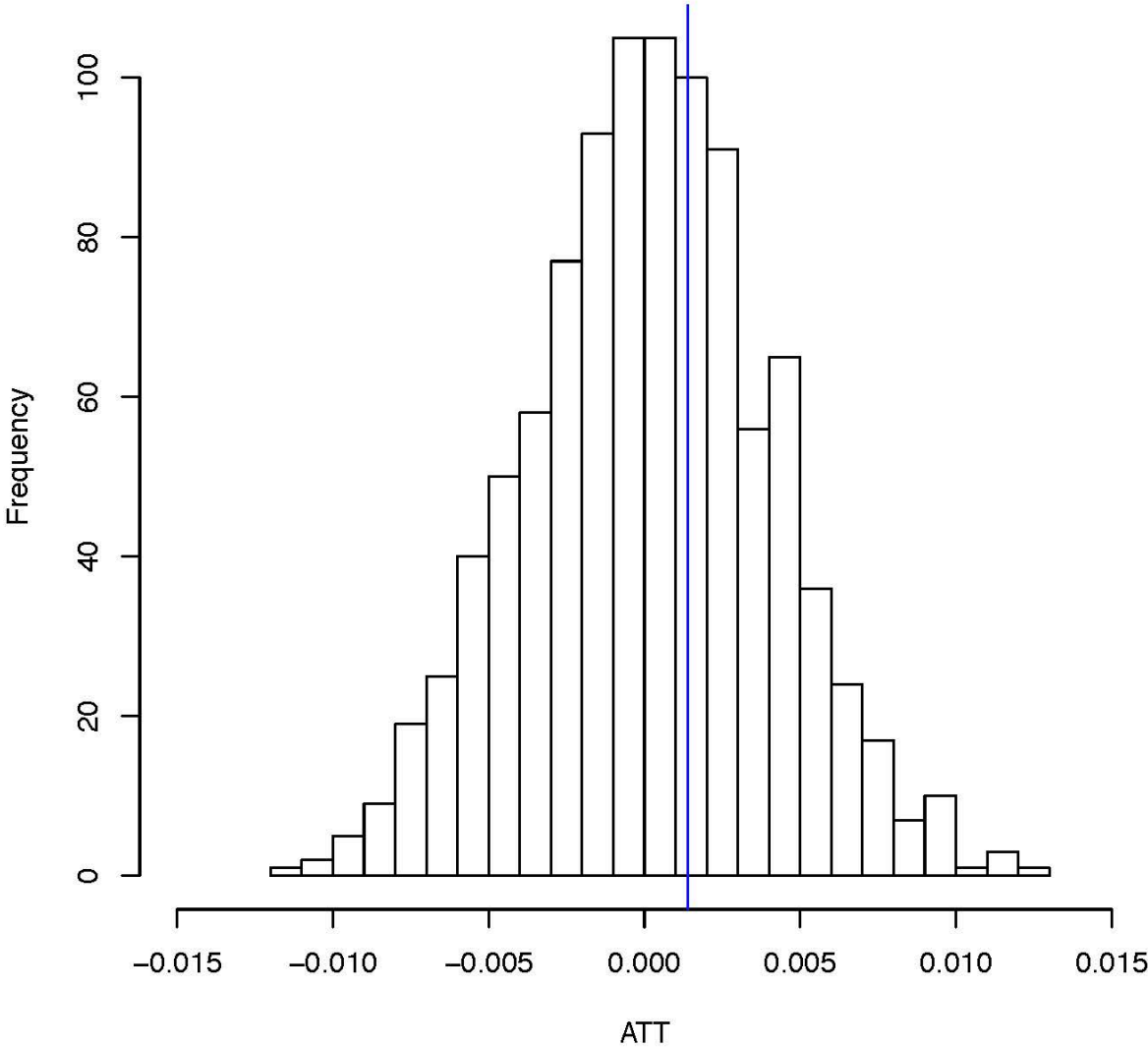
Note: The blue vertical line is the observed point estimate (0.78%) of the association of exposure to three or more homicides and risk of SGA.

Supplemental Figure 9. Randomization inference for exposure during the pre-conception period, first trimester, and the second trimester on risk of SGA.



Note: The blue vertical line is the observed point estimate (1.09%) of the association of exposure to homicides during all three exposure windows and risk of SGA.

Supplemental Figure 10. Randomization inference for three or more homicides during the pre-conception period, first trimester, or second trimester on risk of preterm birth.



Note: The blue vertical line is the observed point estimate (0.14%) of the association of exposure to homicides during all three exposure windows and risk of preterm birth.

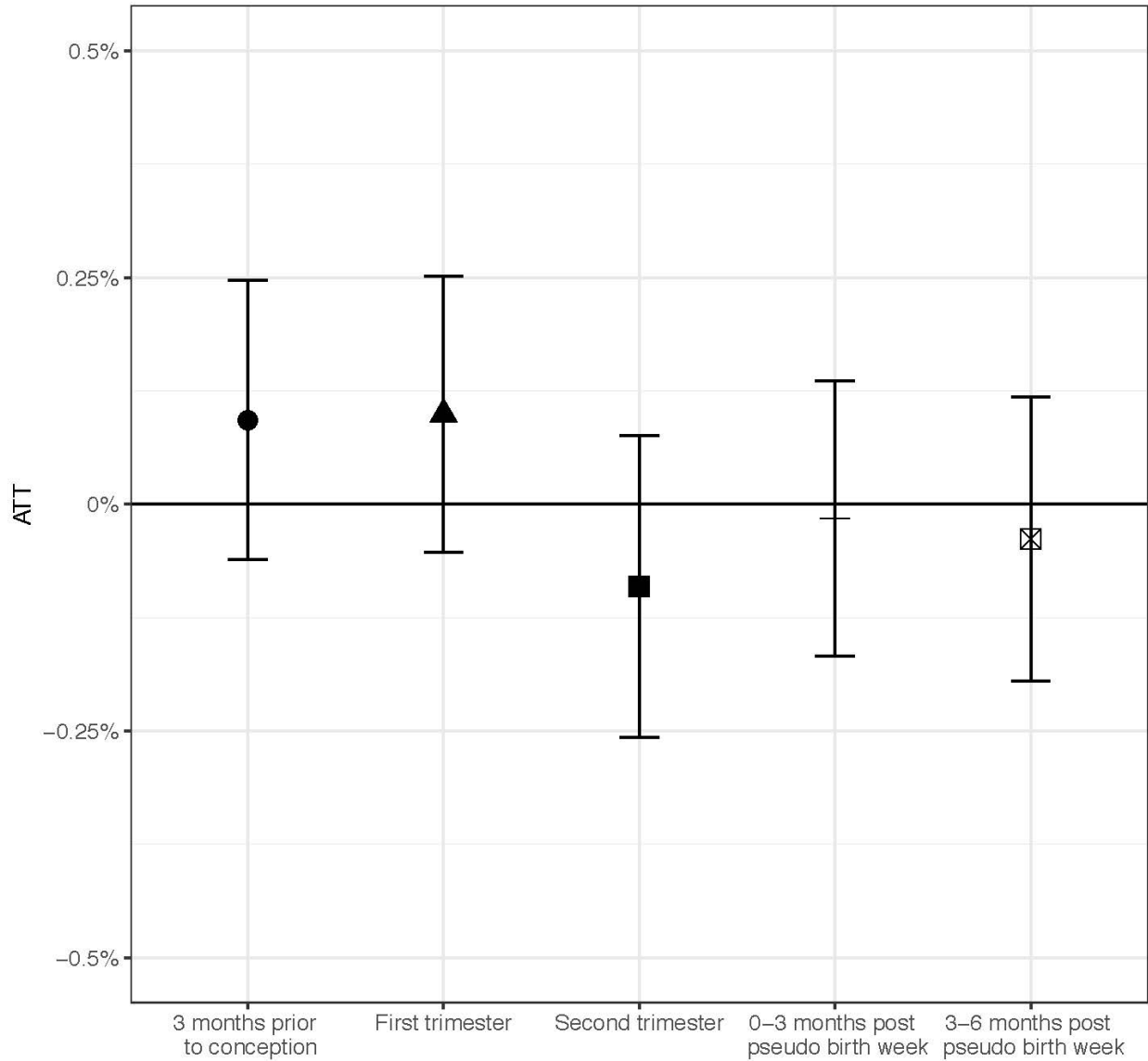
Supplemental Table 1. Randomization inference p-values.

Exposure period	Outcome	P-value from randomization inference
Pre-conception period	Preterm birth	0.109
	SGA	0.559
First trimester	Preterm birth	0.179
	SGA	0.026
Second trimester	Preterm birth	0.589
	SGA	0.799
Exposure to three or more homicides during the pre-conception period, first trimester, and second trimester	Preterm birth	0.054
	SGA	0
Exposure to homicide in the pre-conception period, the first trimester, and the second trimester	Preterm birth	0.361
	SGA	0.004

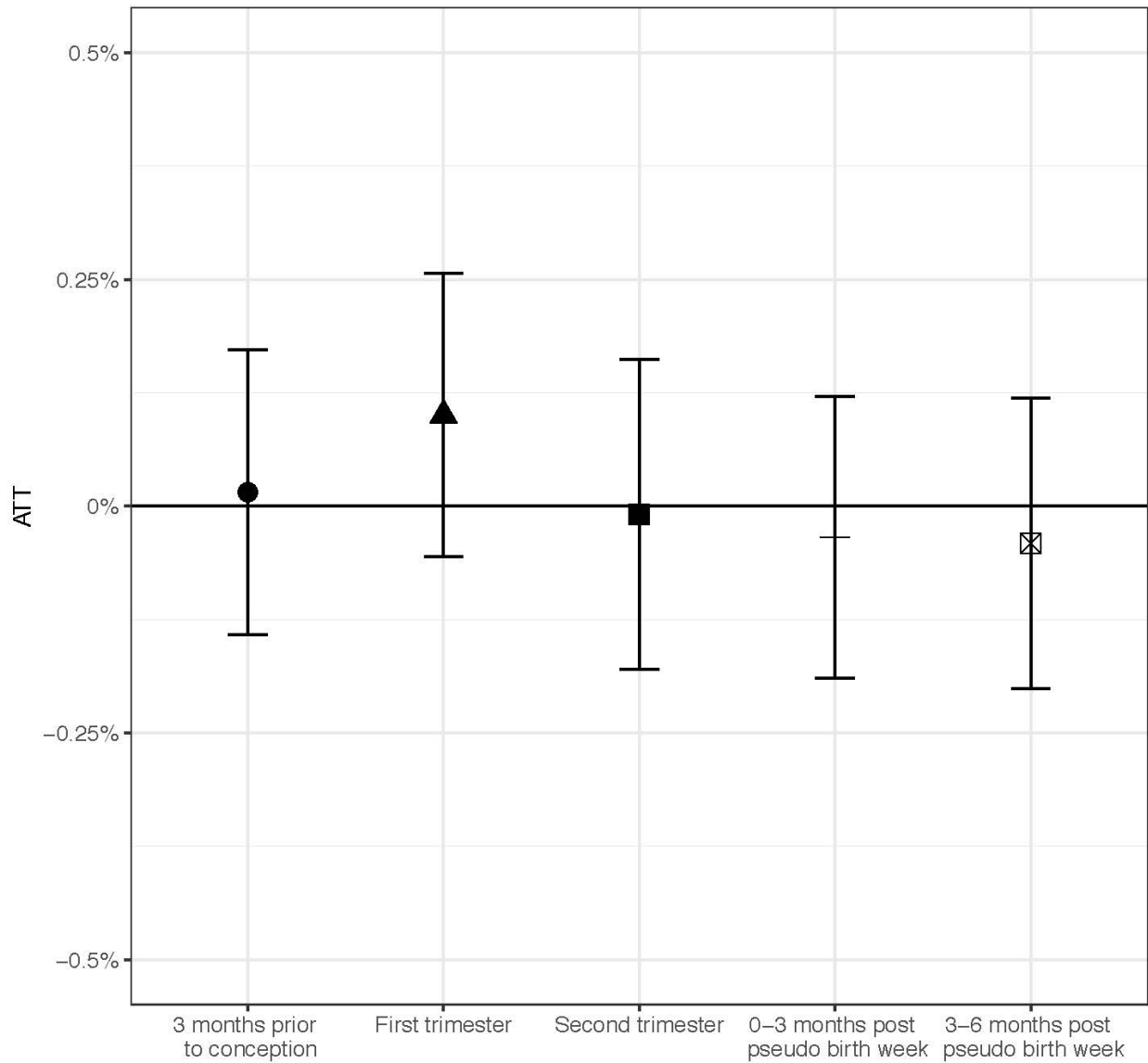
Sensitivity analyses

Due to the high level of missingness of education attainment in the birth record, we excluded it as a covariate from the main analysis. However, we reran our results while controlling for educational attainment, with a missingness indicator. These results are below.

Supplemental Figure 11. Estimated average treatment effect on the treated (ATT) of homicide exposure (adjusting for educational attainment with a missing category) on risk of preterm birth during the pre-conception period (1-12 weeks before conception), first trimester (weeks 0-12), second trimester (weeks 13-22), and the negative controls (0-12 weeks and 13-24 weeks after the pseudo-birth week) in California, 2007-2011.



Supplemental Figure 12. Estimated average treatment effect on the treated (ATT) of homicide exposure (adjusting for educational attainment with a missing category) on risk of SGA during the pre-conception period (1-12 weeks before conception), first trimester (weeks 0-12), second trimester (weeks 13-22), and the negative controls (0-12 weeks and 13-24 weeks after the pseudo-birth week) in California, 2007-2011.



Supplemental Figure 13. Estimated average treatment effect on the treated (ATT) of homicide exposure during all three exposure windows and exposed to at least three homicides (adjusting for educational attainment with a missing category) on risk of preterm birth and SGA in California, 2007-2011.

